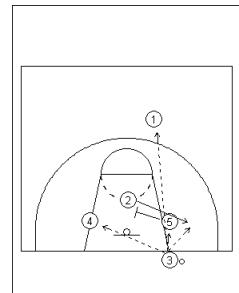
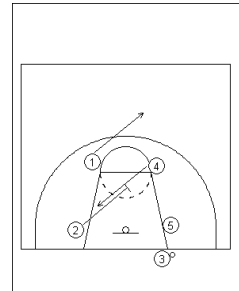


Frankston Blues Out of Bounds Plays

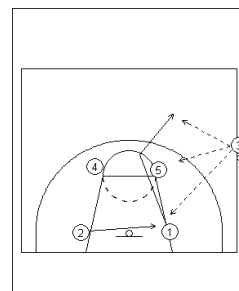
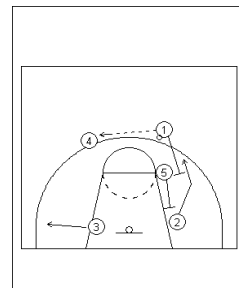
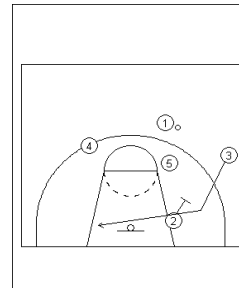
Baseline-

- Two biggs ballside, 2 man sets up screen for 4 man.
- 1 leaks out for safety and 5 man sets screen for screener (2).
- 5 shapes up for ball, giving inbinder four options to pass to



Sideline-

- 3 inbounds to either 1 off of 5's screen or 2 coming across lane or 5 stepping to ball
- 2man sets back screen for 3 while 1 passes to 4 for lob or reversal.
- 4 can look for 3 down low or for 2 coming off staggered screen set by 5 and 1.



Stack v. Pressure -

- 5 loops behind and goes long, 1 and 4 cut in opposite directions, and 2 comes hard to the ball.
- Preferred option is best free throw shooter, but getting it in bounds is priority #1.

